

# 凯元系列-光伏凉棚

## 产品图片



## 系统特点 System Characteristic

- **外观漂亮安全稳固:** 采用6061-T5高强铝合金材料, 表面阳极氧化处理, 高档时尚。
- **新型防水设计:** 行业内首次创新采用EPDM通长防水胶条实现系统防水。
- **门式结构设计:** 立柱和主梁采用门式结构, 不仅结构安全性更强, 且容易拓展安装玻璃屋等。
- **Beautiful Appearance, Safe and Stable:** Strong strength aluminum alloy material, anodized surface, high-grade fashion.
- **New waterproof design:** Adopt EPDM long waterproof tape to realize the system waterproof.
- **Door type structure design:** Stronger structural safety, and easy to expand the installation of glass house

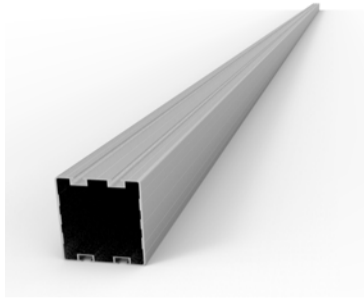
## 技术说明 Technical Description

- **安装位置 Install Location :** 平面屋或地面 Flat Roof or Ground
- **风荷载 Wind Load :** 30m/s or Customizable
- **雪荷载 Snow Load :** 1.4Kn/m<sup>2</sup> or Customizable
- **系统排布 Module Layout :** 按照实际要求设计 Customized Design
- **系统材质 Material :** 6061 Aluminum Alloy
- **系统角度 Module Angle :** 3°
- **表面处理 Surface Treatment :** 阳极氧化 Anonizing
- **设计标准 Design Standard :** 按照实际要求设计 Customized Design
- **使用年限 Design Life :** 25 years

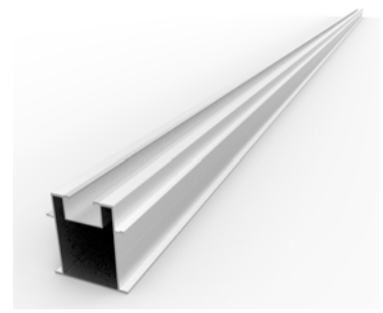
产品清单\$Product list ( )



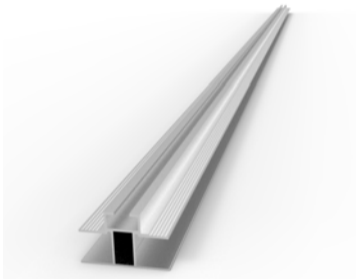
立柱



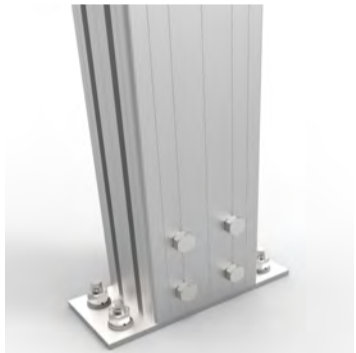
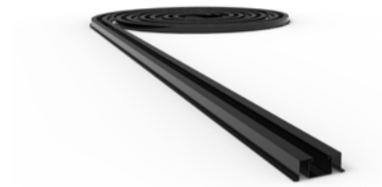
主梁



次龙骨



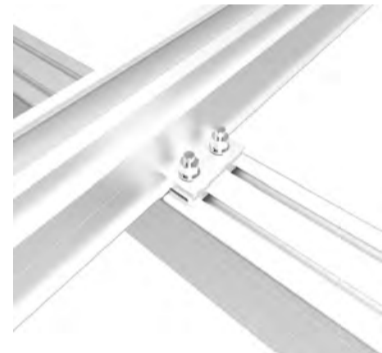
底座



底座连接点



柱顶连接点



主次梁连接点

工程案例图-Project Case



地址: 广东省佛山市南海区银狮路大松园北A08;

Add: No.A08 North of Dasongyuan ,Yinshi Road ,Shishan Town , Nanhai District, Foshan City, Guangdong Province, China